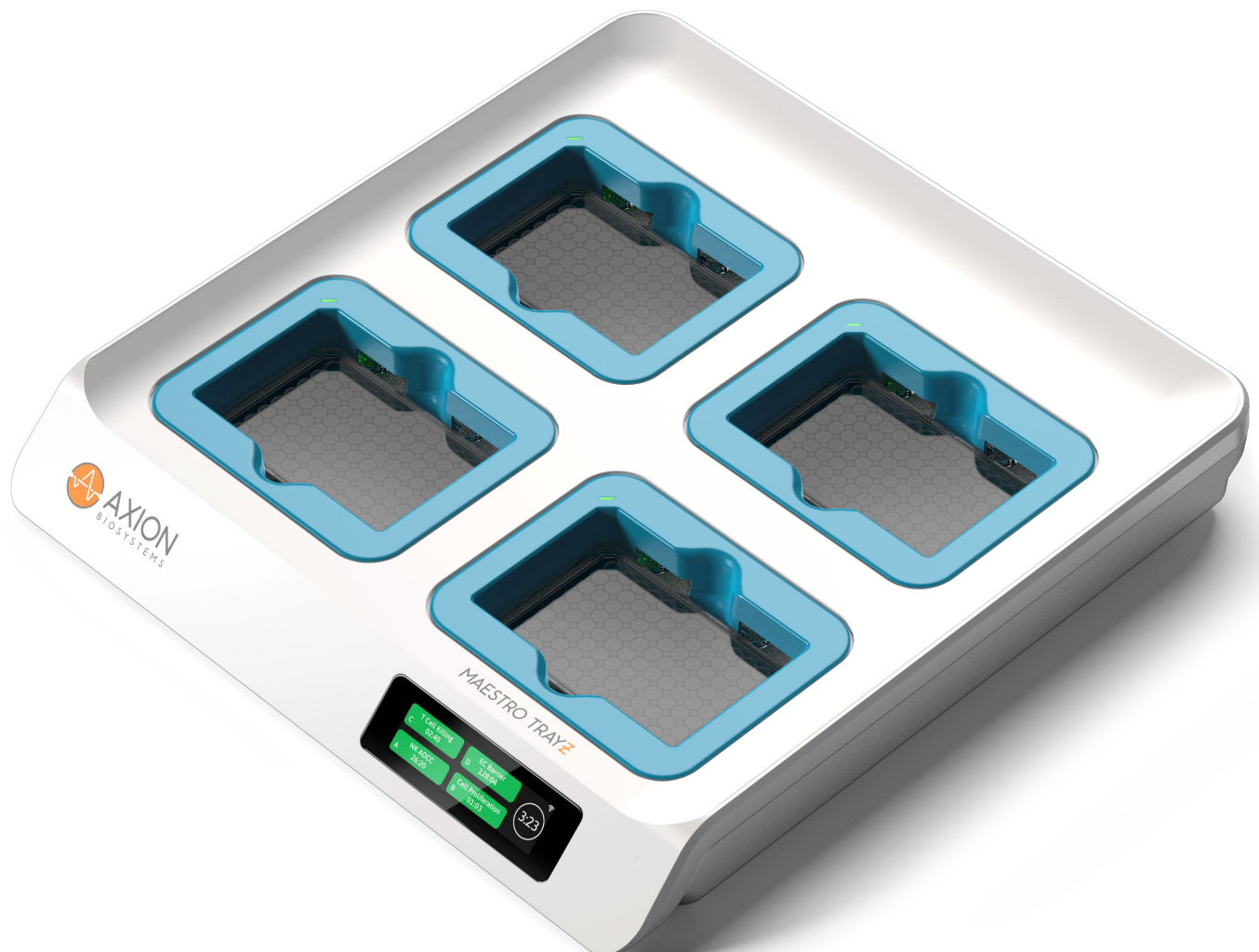


# MAESTRO TRAYZ

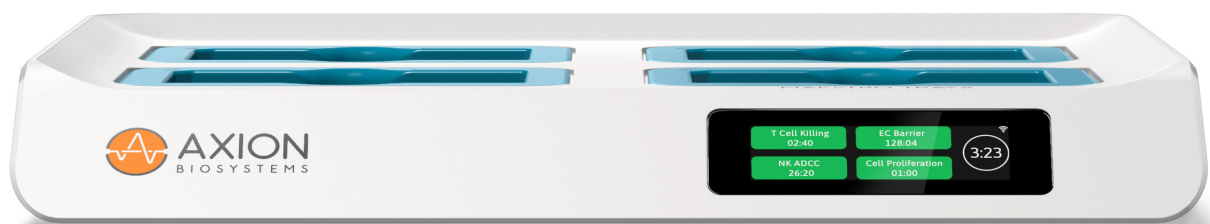
The scalable live-cell assay system



# DISCOVER

## The Maestro TrayZ

**The Maestro TrayZ** is the latest in bioelectronic engineering. With a thin multiplate design developed to accommodate multiple trays in an incubator, you can turn any standard incubator into an assay powerhouse.



*Simple. Fast. Efficient.*

# SEE MORE

Without labels... or limits

Cell-based assays are critical to evaluate human biology *in vitro* but standard endpoint assays can miss important events. Get better data with sensitive bioelectrodes that continuously measure cellular function, without invasive dyes or labels.

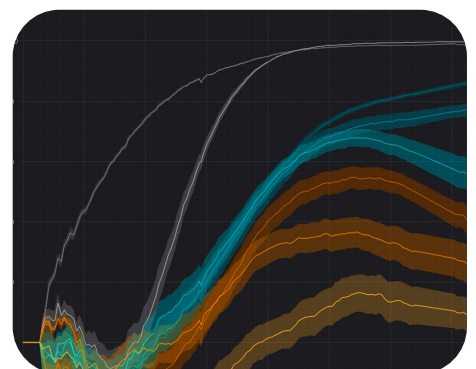


See what it can bring  
to *your assay*:

- Immunotherapy/cell killing
- Cell proliferation
- Cytotoxicity
- Barrier function
- Cell migration/invasion
- Receptor signaling

**To find out more:**

Visit [axionbiosystems.com/applications](https://axionbiosystems.com/applications)  
or scan the QR code



# DO MORE

## Scalability to meet your needs

Each tray of the Maestro TrayZ docks four plates—and multiple trays fit in one incubator. Special features increase throughput without increasing your workload. From basic research to therapeutic development and manufacturing, the Maestro TrayZ suits any lab.



### Barcode *tracking*

Never mix up your plates when going in and out of the incubator.

### Automatic *recording*

Start recording immediately on docking and never miss a moment.

### Interactive *touch screen*

Manage your plates directly at the device with intuitive controls.



# Choose the MAESTRO Z for you

Maestro Z






Maestro TrayZ



Maestro ZHT



Features	Maestro Z	Maestro TrayZ	Maestro ZHT
Throughput:	96-well	Up to 8 x 96-well	384- and 96-well
Environmental Controls:	Built-in	External	Built-in
GxP Compatible:	✓	✓	✓
Barcode Plate Tracking:	✓	✓	✓
Automation API:	✓	No	✓
Dimensions (WxDxH):	280 x 413 x 225 mm 	440 x 450 x 60 mm 	280 x 452 x 225 mm 



*Need GMP compatibility?*

The GxP Impedance Module can help you achieve FDA 21 CFR Part 11 compliance.

**Learn more:**

*[axionbiosystems.com/maestro-trayz](https://axionbiosystems.com/maestro-trayz)*

**Contact us:**

*[axionbiosystems.com/contact](https://axionbiosystems.com/contact)*

**Office locations:**

North America - Europe - Asia Pacific

**For pricing and ordering:**

*[sales@axionbio.com](mailto:sales@axionbio.com)* or scan the QR code



For research use only. Not for use in diagnostic procedures.  
This information is subject to change without notice. © Axion BioSystems, Inc, 2022.